

SPACE

Design by
Pagnon & Pelhaître

Description
Base in square section steel (10 mm / 0.39"), finish in lacquered Epoxy for the white or electrolytic processing for the black chrome. Top in full-body very wear-resistant porcelain stoneware (6 mm / 0.23" thick).

Technical Specifications

www.ligne-roset.com

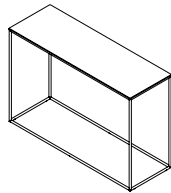
© Ligne Roset 2019



CONSOLE WHITE LACQUERED BASE WHITE STONEWARE TOP

DIMENSIONS

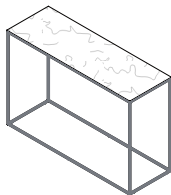
H 28 " - W 41 " - D 14 " -



console white lacquered base white stoneware top

DIMENSIONS

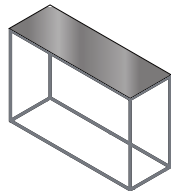
H 28 - "
W 41 - "
D 14 - "



console white lacquered base white marble-effect stoneware top

DIMENSIONS

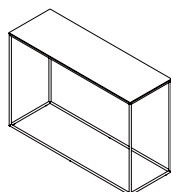
H 28 - "
W 41 - "
D 14 - "



console white lacquered base anthracite metal stoneware top

DIMENSIONS

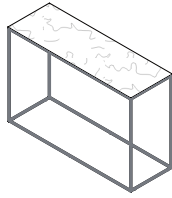
H 28 - "
W 41 - "
D 14 - "



console black chromed base white stoneware top

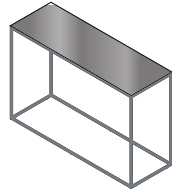
DIMENSIONS

H 28 - "
W 41 - "
D 14 - "



console black chromed base white
marble-effect stoneware top

DIMENSIONS
H 28 - "
W 41 - "
D 14 - "



console black chromed base anthracite
metal stoneware top

DIMENSIONS
H 28 - "
W 41 - "
D 14 - "



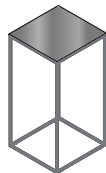
pedestal white lacquered base white
stoneware top

DIMENSIONS
H 28 - "
W 14 - "
D 14 - "



pedestal white lacquered base white
marble-effect stoneware top

DIMENSIONS
H 28 - "
W 14 - "
D 14 - "



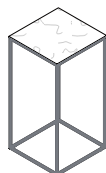
pedestal white lacquered base
anthracite metal stoneware top

DIMENSIONS
H 28 - "
W 14 - "
D 14 - "



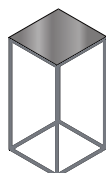
pedestal black chromed base white
stoneware top

DIMENSIONS
H 28 - "
W 14 - "
D 14 - "



pedestal black chromed base white
marble-effect stoneware top

DIMENSIONS
H 28 - "
W 14 - "
D 14 - "



pedestal black chromed base
anthracite metal stoneware top

DIMENSIONS
H 28 - "
W 14 - "
D 14 - "